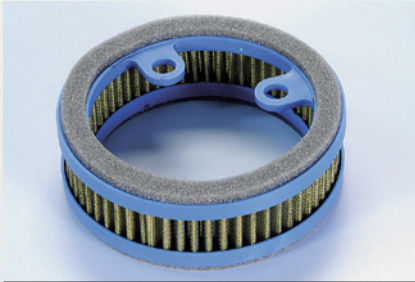
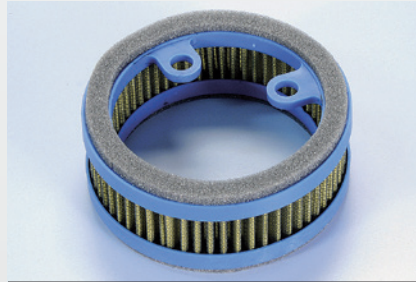
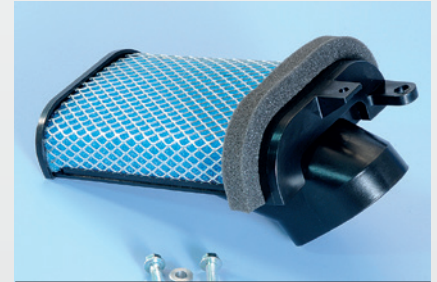


T-MAX VARIATOR FILTERS | FILTRI VARIATORE T-MAX

203.0149 T-Max 500 Variator filter - Filtra variatore

203.0161 T-Max 530 Variator filter - Filtra variatore

203.0154 T-Max 500-530 variator cooling filter
Raffreddamento variatore T-Max 500-530

242.030 gr. 20

Special grease resistant to high temperatures; lithium and molybdenum disulphide added. It is specific for CVT variator. Solid lubricant able to firmly stick to lubricated surfaces and fill the microscopic holes.

Grasso speciale per alte temperature; addizionato di litio e bisolfuro di molibdeno. Specifico per variatori CVT. Lubrificante solido in grado di ancorarsi saldamente alle superfici lubrificate e riempire le cavità microscopiche.

SPEED CONTROL/SUPER SPEED/HI-SPEED SPARE PARTS | RICAMBI SPEED CONTROL/SUPER SPEED/HI-SPEED


PART NUMBER	MEASURE	WEIGHT gr.	CODE	MEASURE	CODE	CODE	MEASURE	CODE	CODE	CODE	CODE	CODE	SPRING	SHIMS	SPRING	BELT
241.200	14x14	7,6	241.199													
241.301	16x13	3,6	242.052	25/D1		242.029	13x20x38	935.050								
"		4,9	242.070													
241.310 ▲	16x13	4,4	242.050	10/D6		242.029	12x37,5		246.055							
"	16x13	5,6	242.068													
241.311	16x13	4,4	242.050	10/D6		242.029	12x37,5		246.055							
"	16x13	5,6	242.068													
241.320	16x13	5,6	242.068			242.029	16x20x37									
"	16x13	4,9	242.070													
241.340	16x13	6,3	242.066			242.029										
"	16x13	6,9	242.065													
241.350 ▲	16x13	5,6	242.068			242.029										
"	16x13	6,9	242.065													
241.360.1▲	16x13	3,6	242.052	25/D1		242.029	13x20x38	935.050								
"	16x13	4,9	242.070													
241.360.2▲	16x13	3,6	242.052	25/D1		242.029	13x20x38	935.050								
"	16x13	4,9	242.070													
241.361	16x13	6,3	242.066	25/D1		242.029	13x20x38	935.050								
"	16x13	4,9	242.070													
241.363	19x15,5	6,8	242.079	31/B		242.029	16x20x41,5									
241.365 ▲	19x15,5	3,2	242.086	31B/05		242.029	16x20x43,5		244.012	246.031	323.0010					
"	19x15,5	4	242.084				13x20x43,5									
241.366 ▲	19x15,5	3,2	242.086	31B/05		242.029	16x20x43,5		244.012	246.031	323.0010					
"	19x15,5	4	242.084	31/B D1			13x20x43,5									
241.390 ▲	16x13	6,9	242.065			242.029										
"	16x13	4,4	242.050													

▲ : out of stock - esaurito

SPEED CONTROL/SUPER SPEED/HI-SPEED SPARE PARTS | RICAMBI SPEED CONTROL/SUPER SPEED/HI-SPEED


PART NUMBER	MEASURE	WEIGHT gr.	CODE	MEASURE	CODE	CODE	MEASURE	CODE	CODE	CODE	CODE	CODE	SPRING	SHIMS	SPRING	BELT
241.400	16x13	6,9	242.065	25/D4		242.029	16x20x37									
"	16x13	4,9	242.070													
241.400.1▲	16x13	3,6	242.052	25/D4		242.029	16x20x37									
"	16x13	5,6	242.068													
241.420 ▲	16x13	7,7	242.064			242.029										
"	16x13	5,6	242.068													
241.440 ▲	16x13	5,6	242.068			242.029										
"	16x13	4,4	242.050													
241.450 ▲	16x13	6,9	242.065	25/01		242.029	12x20x38	935.054								
"	16x13	5,6	242.068													
241.460 ▲	16x13	5,6	242.068	25/D6		242.029	14,8x20x37									
"	16x13	4,4	242.050													
241.460.1▲	16x13	3	242.056	25/D6		242.029	14,8x20x37									
"	16x13	4,9	242.070													
241.460.2▲	16x13	3	242.056	25/D6		242.029	14,8x20x37									
"	16x13	4,9	242.070													
241.470	16x13	6,9	242.065			242.029										
"	16x13	7,7	242.064													
241.480	16x13	5,6	242.068	25/04		242.029	14x20x36,5									
"	16x13	6,9	242.065													
241.490	16x13	7,7	242.064	25/04		242.029	14x20x36,5									
"	16x13	5,6	242.068													
241.500 ▲	16x13	8,4	242.063			242.029										
"	16x13	6,9	242.065													
241.510	16x13	7,7	242.064	25/01		242.029	12x20x38	935.054								
"	16x13	8,4	242.063													
241.510.1	16x13	10	242.062	25/01		242.029	12x20x38	935.054					243.021		248.008	
"	16x13	7,7	242.064										243.022			
241.510.2	16x13	10	242.062	25/01		242.029	12x20x38	935.054					243.021		248.014	
"	16x13	7,7	242.064										243.022			
241.520	16x13	7,7	242.064	25/04		242.029	14x20x36,5									
"	16x13	6,3	242.066													
241.530 ▲	16x13	6,9	242.065			242.029										
"	16x13	4,9	242.070													
241.544 ▲	19x15,5	3,2	242.086	31/D6		242.029	14,8x20x50		244.111	246.030						
"	19x15,5	3,6	242.085	31/05			16x20x52									
241.545 ▲	19x15,5	3,2	242.086	31B/05		242.029	16x20x45		244.111	246.030	323.0010					
"	19x15,5	3,6	242.085													
241.550	16x13	5,6	242.068	25/D4		242.029	16x20x38									
"	16x13	4,4	242.050													
241.561	19x15,5	8,1	242.078	31/D6		242.029	14,8x20x50									
241.561.1▲	19x15,5	8,1	242.078	31/D6		242.029	14,8x20x50									
241.561.2▲	19x15,5	8,1	242.078	31/D6		242.029	14,8x20x50									
241.570	16x13	7,7	242.064			242.029	16x20x38									
"	16x13	5,6	242.068													
241.580	16x13	7,7	242.064	25/01		242.029	12x20x37									
"	16x13	8,4	242.063													
241.590	16x13	8,4	242.063	25/04		242.029	14x20x36,5									
"	16x13	6,9	242.065													
241.600 ▲	20x17	9	242.172			242.034	17x27x48,5					242.036				
241.601 ▲	20x17	9,5	242.171	30/D1		242.034	16x27x48					242.036	246.043			
241.602	20x12	11	242.293				19x27x60,5					242.036	246.043			
241.603 ▲	19x13,5	10,5	242.162			242.038	14,8x22x43,5									

▲ : out of stock - esaurito

 APPLICATIONS TABLE
 CYLINDER KITS
 MUFFLERS
 TRANSMISSIONS
 FUEL SYSTEMS
 ENGINE SPARE PARTS
 SETUP
 BLUE LINE
 MINIBIKES
 THOR ENGINES
 E-BIKE MOTORS

SPEED CONTROL/SUPER SPEED/HI-SPEED SPARE PARTS | RICAMBI SPEED CONTROL/SUPER SPEED/HI-SPEED

PART NUMBER	MEASURE	WEIGHT gr.	CODE	MEASURE	CODE	CODE	MEASURE	CODE	CODE	CODE	CODE	CODE	SPRING	SHIMS	SPRING	BELT
241.604 ▲	23x18	14,8-22					17x27x62,2					242.036				
241.605	23x18	16	242.143			242.035	17x27x62,2					242.036	246.043			
241.606 ▲	23x18	12,4	242.148				17x27x62,2					242.036	246.043			
241.607 ▲	20x17	9	242.172			242.034	17x27x48,5									
241.608	20x17	15,7	242.167	30/C3		242.034	17x27x50,3					242.036	246.043			
241.609 ▲	20x17	11,8	242.290	30/D3		242.034	17x27x47,8					242.036	246.043			
"	20x17	14,7	242.166													
241.610 ▲	23x18	14,8	242.144	34/D2		242.035	19,8x27x61,5					242.036				
241.611	26,1x12,8	14,6	242.202				21,8x31x61,8					242.037				
241.612 ▲	20x17	11	242.291			242.034	15x27x48					242.036				
241.613 ▲	19x15,5	5,3	242.088	31/D6		242.029	14,8x20x48,8									
241.614 ▲	15x12	7,4	242.127			246.035	16x22x40,8					242.043				
"	15x12	8,8	242.124													
241.615 ▲	19x13,5	10,8-11,8	242.163			242.038										
241.616	28x20	26	242.239				25,85x35x72					242.048				
241.618 ▲	25x15	15	242.220				25x35x72					242.048				
241.619	20x17	9	242.172	30/C2		242.034	15x27x50					242.036	246.043			
"	20x17	13,2	242.165													
241.620 ▲	20x17	10,4	242.170			242.034										
241.621 ▲	20x17	14,7-13,2		30/D3		242.034	17x27x47,8					242.036				
241.622 ▲	16x13	6,3	242.066	25/D6		242.029										
"				25/D1												
241.623	16x13	7,7	242.064			242.029										
241.624 ▲	19x17	7,0	242.093			242.034	17x27x49					242.036				
241.625 ▲	16x13	5,6	242.068	25/01		242.029	12x20x38,5									
"	16x13	4,9	242.070													
241.626	16x13	5,6	242.068	25/04		242.029	14x20x36,5									
"	16x13	6,9	242.065													
241.627 ▲	25x21,8	24,1	242.212			246.038	22x31x62,5					242.037				
241.628 ▲	20x12	11	242.293				19x27x60,5					242.036				
241.630 ▲	25x15	14,1	242.221				25x35x72					242.048				
"	25x15	16,2	242.222													
241.631	25x15	12	242.224				25x35x72					242.048				
241.632	16x13	4,9	242.070	25/01		242.029	12x20x38,5									
"	16x13	5,6	242.068													
241.632.1	16x13	4,9	242.070	25/01		242.029	12x20x38,5								243.021	248.038
"	16x13	5,6	242.068												243.022	
241.633 ▲	23x18	22,2	242.142			246.036	19x27x63,5					242.036				
241.634 ▲	16x13	3,2	242.054	25/01			12x20x37									
"	16x13	3	242.056													
241.635 ▲	23x18	22,2	242.142			246.036	17x27x64,5					242.036				
241.636	25x17	14	242.280				22x31x62,5					242.037				
241.637	27,6x21,5	20,5	242.270				22x31x63,5					242.037				
241.638 ▲	19x17	5,5	242.095	30/D1		242.034	16x27x48,5					242.036	246.043			
"	19x17	8,2	242.092													
241.639	19x10	3	242.263	9/31/D6		242.029	14,8x20x50									
"	19x10	4,5	242.267													
241.639.1▲	19x10	3	242.263	9/31/D6		242.029	14,8x20x50									
"	19x10	4,5	242.267													
241.640 ▲	16x10	3	242.252	9/25/D1		242.029	13x20x38	935.050								
"	16x10	4	242.254													
241.640.1▲	16x10	3	242.252	9/25/D1		242.029	13x20x38	935.050	244.010							
"	16x10	4	242.254													


▲ : out of stock - esaurito

SPEED CONTROL/SUPER SPEED/HI-SPEED SPARE PARTS | RICAMBI SPEED CONTROL/SUPER SPEED/HI-SPEED


PART NUMBER	MEASURE	WEIGHT gr.	CODE	MEASURE	CODE	CODE	MEASURE	CODE	CODE	CODE	CODE	CODE	SPRING	SHIMS	SPRING	BELT
241.641 ▲	16x10	3	242.252	9/25/D1		242.029	13x20x38	935.050								
"	16x10	4	242.254													
241.641.1	16x10	3	242.252	9/25/D1		242.029	13x20x38	935.050	244.010							
"	16x10	4	242.254													
241.642 ▲	19x10	2,1	242.260	9/31/D6		242.029	14,8x20x50		244.110	246.030	323.0010					
"	19x10	2,5	242.262	9/31/05			16x20x52									
241.643 ▲	19x10	2,1	242.260	9/31/D1		242.029	13x20x43,5		244.012	246.031	323.0010					
"	19x10	2,5	242.262	9/31/05			16x20x50									
241.644 ▲	20x17	10,4	242.170	30/C2		242.034	15x27x49					242.036				
241.645	20x17	11,8	242.290	30/D3		242.034	17x27x46,5					242.036	246.043			
241.646	19x17	6	242.094	30/D1		242.034	16x27x49,5					242.036	246.043			
"	19x17	8,2	242.092													
"	19x17	10	242.091													
241.647	16x13	6,9	242.065	25/04		242.029	14x20x39									
241.648 ▲	16x10	3	242.252	9/25/D1		242.029	13x20x38	935.050								
"	16x10	3,5	242.253													
241.649	20x12	11	242.293				19x27x60,5					242.036	246.043			
241.650	23x18	13	242.149				22x31x66,9		244.121			242.037	246.044			
241.651	26,1x12,8	11	242.205									242.037				
241.652 ▲	25x11	7,5	242.319			242.046	25x35x72,2									
241.653	19x17	8,4	242.092	30/C4		242.034	19x27x53					242.036				
241.654 ▲	28x20	15,5	242.236				25,85x35x72					242.048				
241.655	16x13	8,4	242.063			242.029	16x20x39									
"	16x13	7,7	242.064													
241.656 ▲	20x17	13,2	242.165			242.034						242.036				
241.657	25x21,8	16,3	242.215			246.038	17x31x62,2									
241.658	16x13	6,9	242.065	25/06		242.029	13x20x37,5									
241.659 ▲	20x17	13,2	242.165			242.034						242.036	246.043			
"	20x17	14,7	242.166													
241.660 ▲	20x17	11,8	242.290			242.034	17x27x52					242.036				
241.661	23x18	14,8	242.144				17x27x62,2					242.036				
241.662 ▲	16x13	6,3	242.066	25/04		242.029										
241.663	25x19	15,5	242.361				25x40x75,7					246.052	246.051			
241.664 ▲	20x12	7,5	242.371			242.034	15x27x50					242.036	246.043		243.076	
241.665	20x12	9,2	242.375			242.034	17x27x46,5					242.036	246.043		243.077	
241.666 ▲	19x12	7,6	242.322			242.034	17x27x47,5					242.036	246.043			
"	19x12	5,5	242.324													
241.667	23x18	14,8	242.144			246.041	19x27x64,5					242.036	246.043			
241.668 ▲	25x11	8,3	242.310			242.045	25x35x72,2									
"	25x11	7,5	242.319													
241.670	16x13	6,9	242.065	25/D1		242.029	13x20x37,5	935.050						243.093		
241.670.1	16x13	5,6	242.068	25/D1		242.029	13x20x37,5	935.050						243.093	248.003	
"	16x13	6,9	242.065											243.094		
241.670.2	16x13	5,6	242.068	25/D1		242.029	13x20x37,5	935.050						243.093	248.004	
"	16x13	6,9	242.065											243.094		
241.671	16x13	6,9	242.065	25/D1		242.029	13x20x37,5							243.093		
241.672	19x15,5	6,3	242.081	31/D6		242.029	14,8x20x50							243.090		
241.672.1	19x15,5	5	242.082	31/D6		242.029	14,8x20x50							243.090	248.044	
"	19x15,5	6,3	242.081											243.091		
241.672.2	19x15,5	5	242.082	31/D6		242.029	14,8x20x50							243.090	248.078	
"	19x15,5	6,3	242.081											243.091		
241.674	19x15,5	4,7	242.334	31/D6		242.029	14,8x20x49,4							243.090		
241.675	16x13	6,9	242.065	25/D1		242.029	13x20x38	935.050						243.093		

▲ : out of stock - esaurito

 APPLICATIONS TABLE
 CYLINDER KITS
 MUFFLERS
 TRANSMISSIONS
 FUEL SYSTEMS
 ENGINE SPARE PARTS
 SETUP
 BLUE LINE
 MINIBIKES
 THOR ENGINES
 E-BIKE MOTORS

SPEED CONTROL/SUPER SPEED/HI-SPEED SPARE PARTS | RICAMBI SPEED CONTROL/SUPER SPEED/HI-SPEED


PART NUMBER	MEASURE	WEIGHT gr.	CODE	MEASURE	CODE	CODE	MEASURE	CODE	CODE	CODE	CODE	CODE	SPRING	SHIMS	SPRING	BELT	
241.676	16x13	7,7	242.064			242.029	16x20x39									243.093	
241.680 ▲	19x10	2,1	242.260	9/31/D6		242.029	14,8x20x50		244.110	246.030			246.042	246.049			
"	19x10	2,5	242.262														
241.681 ▲	19x10	2,1	242.260	9/31/05		242.029	16x20x50		244.110	246.030			246.042	246.049			
"	19x10	2,5	242.262														
241.682 ▲	19x10	2,1	242.260	9/31/D1		242.029	13x20x42		244.012	246.031	323.0010		246.042	246.048			
"	19x10	2,5	242.262														
241.683 ▲	19x10	2,1	242.260	9/31/05		242.029	16x20x49		244.012	246.031	323.0010		246.042	246.048			
"	19x10	2,5	242.262														
241.684 ▲	25x11	7,5	242.319		952.048	242.046	25x40x72,2		244.122								
"	25x11	8,3	242.310														
241.685 ▲	25x11	7,5	242.319		952.048	242.046	25x40x72,2										
"	25x11	8,3	242.310														
241.686	20x17	10,4	242.170	30/D4		242.034	19,8x27x50,5				242.036	246.043				243.047	
241.687	16x13	6,9	242.065	25/04		242.029	14x20x39										
241.688 ▲	20x17	9	242.172	30/D1		242.034	16x27x48				242.036	246.043					
241.688	19x17	9	242.377	30/D1		242.034	16x27x48,5										243.075
241.689 ▲	19x17	9,3		30/C1		242.034	15x27x48										
241.690	19x17	9,3		30/C1		242.034	15x27x48				242.036	246.043					243.076
241.691 ▲	23x18	24,3	242.141			246.036	19x27x63,5										
"	23x18	26,4	242.140														
241.692	20x17	13,2	242.165			242.034	17x27x49				242.036	246.043					243.076
241.693	25x15	12	242.224				25x35x72				242.048	246.045					243.097
241.694	23x18	18	242.301				19,3x27x60,9				242.036	246.043					243.082
241.695	25x11	7,5	242.319		952.048	242.046	25x35x72,2				242.048	246.045					243.080
"	25x11	8,3	242.310														
241.696	25x11	7,5	242.319		952.048	242.046	25x35x72,2		244.122		242.048	246.045					243.096
"	25x11	8,3	242.310														
241.697	20x12	9,2	242.375			242.034	15x27x47,5				242.036	246.043					243.076
241.698	16x13	6,3	242.066	25/04		242.029	14x20x39										
241.699	25x16	12	242.391				19,5x31x64,6				242.037	246.044					243.079
241.700	25x15	16,2	242.222				25x35x75,3				242.048	246.045					243.099
"	25x15	18	242.226														
241.701	25x15	12	242.224				25x35x75,3		244.126		242.048	246.045					243.099
"	25x15	14	242.221														
241.701.1	25x15	12	242.224				25x35x75,3		244.126		242.048	246.045					243.099
"	25x15	14	242.221														248.089
241.702	19x15,5	8,1	242.078	31B/02		242.029	15x20x40,5										
241.703	23x18	16	242.143			242.035	19,3x27x60,9				242.036	246.043					243.089
"	23x18	19	242.302														
241.704	16x13	4,9	242.070	25/04		242.029	14x20x40										
241.705 ▲	19x15,5	3,2	242.086	31/D6		242.029	14,8x22x50							246.049 Ø14,8			243.103
"	19x15,5	3,8	242.333														
241.706 ▲	19x15,5	3,2	242.086	31/05		242.029	16x22x50							246.049 Ø14,8			243.103
"	19x15,5	3,8	242.333											246.054 Ø16			
241.707 ▲	19x15,5	3,2	242.086	31/D1		242.029	13x22x49				323.0010			246.048 Ø13			243.104
"	19x15,5	3,8	242.333														
241.708 ▲	19x15,5	3,2	242.086	31/05		242.029	16x22x49				323.0010			246.048 Ø13			243.104
"	19x15,5	3,8	242.333											246.054 Ø16			
241.709	28x20	22	242.238			246.050	25x40x80,7										
"	28x20	26	242.239														
241.710	19x17	9	242.377	30/D3		242.034	17x27x47,4				242.036	246.043					243.084
"	19x17	13,5	242.379														

▲ : out of stock - esaurito

SPEED CONTROL/SUPER SPEED/HI-SPEED SPARE PARTS | RICAMBI SPEED CONTROL/SUPER SPEED/HI-SPEED


PART NUMBER	MEASURE	WEIGHT gr.	CODE	MEASURE	CODE	CODE	MEASURE	CODE	CODE	CODE	CODE	CODE	SPRING	SHIMS	SPRING	BELT
241.712	20x17	10	242.353	30/C2		242.034	15x27x49					242.036	246.043		243.084	
241.713	19x17	10	242.091	30/D3		242.034	17x27x47,4					242.036	246.043		243.077	
"	19x17	13,5	242.379													
241.714	25x15	13	242.225			242.046	25x35x72,2					242.048	246.045			
"	25x15	15	242.220													
241.716	25x11	6,5	242.317		952.048	242.046	25x35x66,3					242.048	246.045			
241.717	25x11	7,3	242.316			242.046	22x35x65					242.048	246.045			
"	25x11	8,3	242.310													
241.718	19x17	12	242.090	30/D3		242.034	17x27x45,2					242.036	246.043			
241.719	20x17	15,7	242.167	30/D3			17x27x46,5									248.069.1
241.720	19x17	10	242.091	30/C2		242.034	16x27x49,5					242.036	246.043			
241.721	20x17	9	242.172	30/C1		242.034	16,5x27x51					242.036	246.043			
"	20x17	11,8	242.290													
241.722	19x17	12	242.090	30/C1		242.034	17x27x49					242.036	246.043			
241.723	19x17	10	242.091	30/C1		242.034	17x27x46,5								243.076	
"	19x17	12	242.090													
241.724	19x17	10,7	242.099	30/C5		242.034	16x27x54,5									
"	19x17	11,5	242.389													
241.725	19x15,5	3,8	242.333	31/HD6	952.049	246.053	14,8x22x50							246.049 Ø14,8	243.103	
"	19x15,5	4,3	242.083													
241.726	19x15,5	3,8	242.333	31/H05	952.050	246.053	16x22x50							246.049 Ø14,8	243.103	
"	19x15,5	4,3	242.083											246.054 Ø16		
241.727	19x15,5	3,2	242.086	31/H06	952.051	246.053	13x22x49				323.0010			246.048 Ø13	243.104	
"	19x15,5	3,8	242.333													
241.728	19x15,5	3,2	242.086	31/H05	952.050	246.053	16x22x49				323.0010			246.048 Ø13	243.104	
"	19x15,5	3,8	242.333											246.054 Ø16		
241.729	19x17	10	242.091	30/C5		242.034	16x27x51								243.084	
241.731	19x15,5	3,2	242.086	31B/D1		242.029	13x22x42								243.104	
"	19x15,5	3,8	242.333													
241.732	19x17	9	242.377	30/C3		242.034	20x27x52,5								243.076	
241.733	19x17	9,7	242.381	30/D3		242.034	17x27x45,5								243.106	
"	19x17	11,5	242.389													
241.735	25x15	12	242.224				25x35x75,3	244.126				242.048	246.045			
"	25x15	14	242.221													
241.737	19x15,5	3,6	242.085	31/D6		242.029	14,8x20x45,6									
241.738	25x15	14	242.221				25x35x75,3					242.048	246.045		243.080	
241.739	19x15,5	3,8	242.333	31/H05	952.050	246.053	16x22x50							246.049 Ø14,8	243.103	
"	19x15,5	4,3	242.083											246.054 Ø16		
241.740	19x15,5	3,2	242.086	31/H05	952.050	246.053	16x22x49				323.0010			246.048 Ø13	243.104	
"	19x15,5	3,8	242.333											246.054 Ø16		
241.741																
241.742	25x21,8	14,2	242.209			246.038	17x31x62,2					242.037	246.044		243.108	

 APPLICATIONS TABLE
 CYLINDER KITS
 MUFFLERS
 TRANSMISSIONS
 FUEL SYSTEMS
 ENGINE SPARE PARTS
 SETUP
 BLUE LINE
 MINIBIKES
 THOR ENGINES
 E-BIKE MOTORS

▲ : out of stock - esaurito